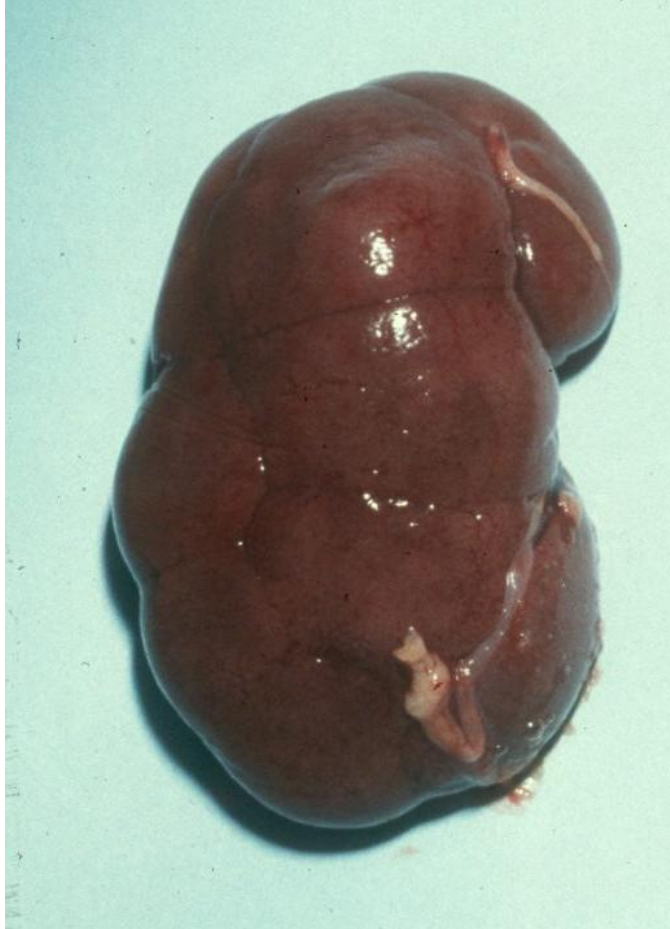


NORMAL KIDNEY



IMAGES: KIDNEY CROSS SECTION:

<http://www-medlib.med.utah.edu/WebPath/RENAHTML/RENAL116.html>

INFORMATION ON KIDNEY ANATOMY AND PHYSIOLOGY:

Gray's Anatomy – Kidneys

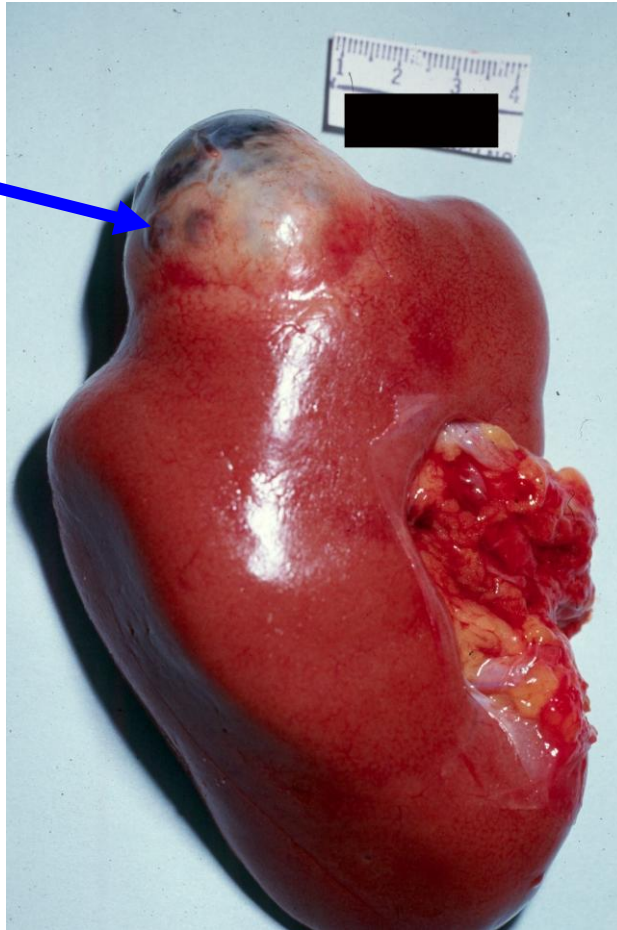
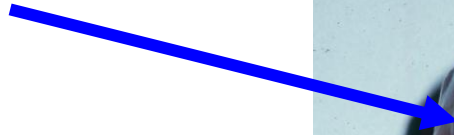
<http://www.bartleby.com/107/253.html>

National Kidney and Urologic Diseases Information Clearinghouse:

<http://kidney.niddk.nih.gov/kudiseases/pubs/yourkidneys/>

RENAL CELL CARCINOMA

Kidney
Tumor



RENAL CELL CARCINOMA

IMAGES: RENAL CELL CARCINOMA:

Gross cross section of a carcinoma:

<http://www-medlib.med.utah.edu/WebPath/RENAHTML/RENAL053.html>

Kidney with very large carcinoma:

<http://www-medlib.med.utah.edu/WebPath/RENAHTML/RENAL052.html>

INFORMATION ON RENAL CELL CARCINOMA:

Medline Plus Medical Encyclopedia:

<http://www.nlm.nih.gov/medlineplus/ency/article/000516.htm>

NORMAL CORONARY ARTERY

IMAGES: CORONARY ARTERY:

Microscopic image of a cross section of a coronary artery:

<http://www-medlib.med.utah.edu/WebPath/CVHTML/CV004.html>

INFORMATION ON CORONARY ARTERY ANATOMY AND PHYSIOLOGY:

Cleveland Clinic Heart Center:

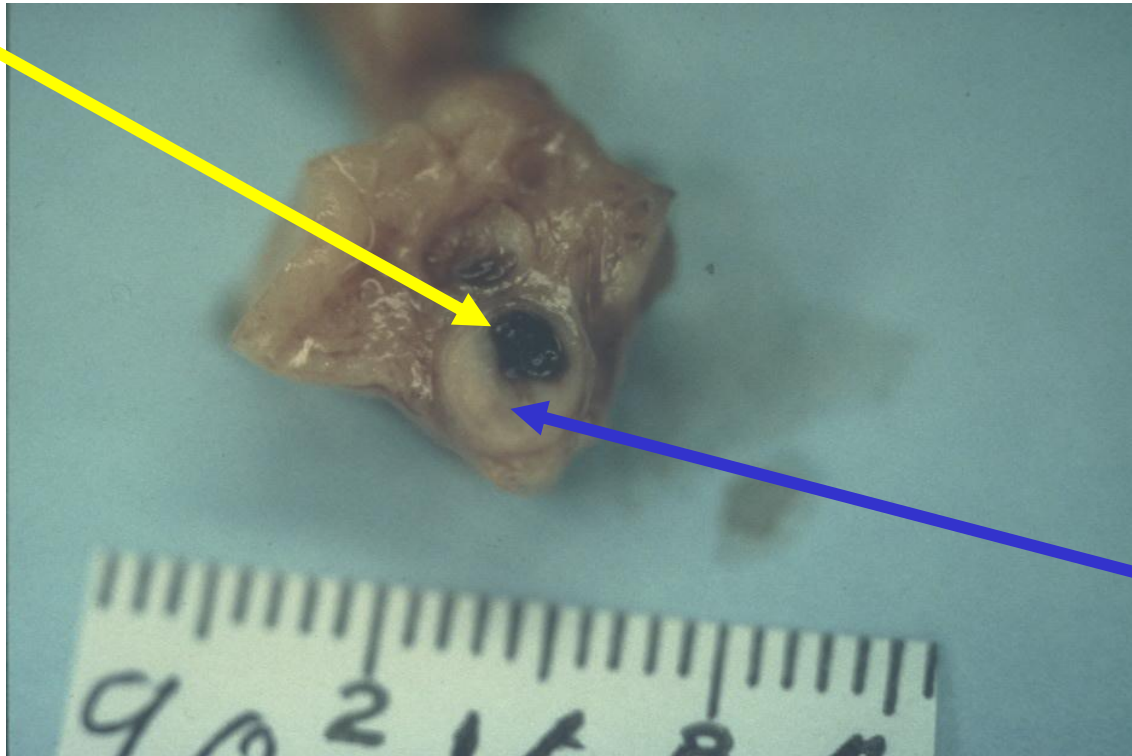
http://www.clevelandclinic.org/heartcenter/pub/guide/disease/cad/cad_arteries.htm

Cardiovascular Consultants:

<http://www.cardioconsult.com/Anatomy/>

CORONARY ARTERY THROMBOSIS

Thrombosis
or blood clot



Atherosclerosis
or build up of
artery wall

CORONARY ARTERY DISEASE OR ATHEROSCLEROSIS

IMAGES: CORONARY ARTERY DISEASE:

Microscopic cross section of narrowed coronary artery:

<http://www-medlib.med.utah.edu/WebPath/CVHTML/CV007.html>

Gross cross section of atherosclerotic coronary artery:

<http://www-medlib.med.utah.edu/WebPath/CVHTML/CV108.html>

INFORMATION ON CORONARY ARTERY DISEASE:

Medline Plus Medical Encyclopedia:

<http://www.nlm.nih.gov/medlineplus/ency/article/000171.htm>

How Stuff Works:

<http://health.howstuffworks.com/adam-200034.htm> - Atherosclerosis

<http://health.howstuffworks.com/adam-200138.htm> - Coronary bypass surgery

<http://health.howstuffworks.com/adam-200082.htm> - Coronary artery blockage

NORMAL LUNGS

IMAGES: LUNG:

Lung cross section:

<http://www.meddean.luc.edu/lumen/bbs/p/ppi2.html>

Normal lungs and heart:

<http://www.meddean.luc.edu/lumen/bbs/p/ppi1.html>

INFORMATION ON LUNG ANATOMY AND PHYSIOLOGY:

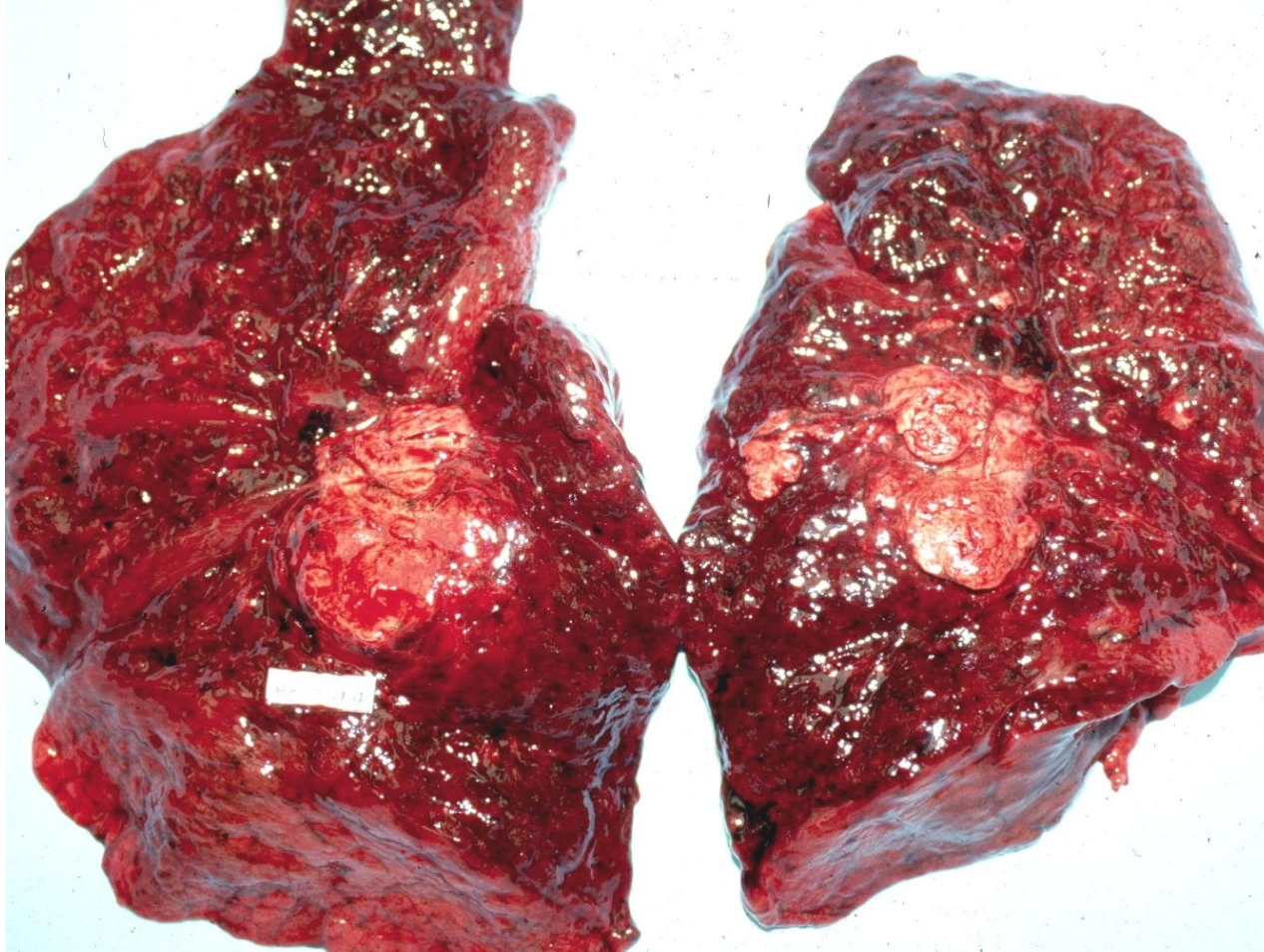
Gray's Anatomy – Lungs:

<http://www.bartleby.com/107/240.html>

The Candian Lung Association:

http://www.lung.ca/lung101-renseignez/respiratory-respiratoire/how-comment/index_e.php

CANCEROUS LUNG



LUNG CANCER

IMAGES: LUNG CANCER:

Gross cross section:

<http://www-medlib.med.utah.edu/WebPath/LUNGHTML/LUNG068.html>

Multiple masses:

<http://www-medlib.med.utah.edu/WebPath/LUNGHTML/LUNG078.html>

Quit Smoking Support (multiple types of diseased lungs pictured):

<http://www.quitsmokingsupport.com/lungphotos.htm>

INFORMATION ON LUNG CANCER:

Medline Plus Medical Encyclopedia:

<http://www.nlm.nih.gov/medlineplus/ency/article/000122.htm>

Lung Cancer.org:

<http://www.lungcancer.org/reading/>

NORMAL HEART

IMAGES: HEART:

Cross section of a heart:

<http://radiology.uchc.edu/eAtlas/CV/606.htm>

Whole normal heart:

<http://www-medlib.med.utah.edu/WebPath/CVHTML/CV001.html>

INFORMATION ON HEART ANATOMY AND PHYSIOLOGY:

Gray's Anatomy – Heart:

<http://www.bartleby.com/107/138.html>

Anatomy of the Human Heart:

<http://www.texasheart.org/HIC/Anatomy/anatomy2.cfm>

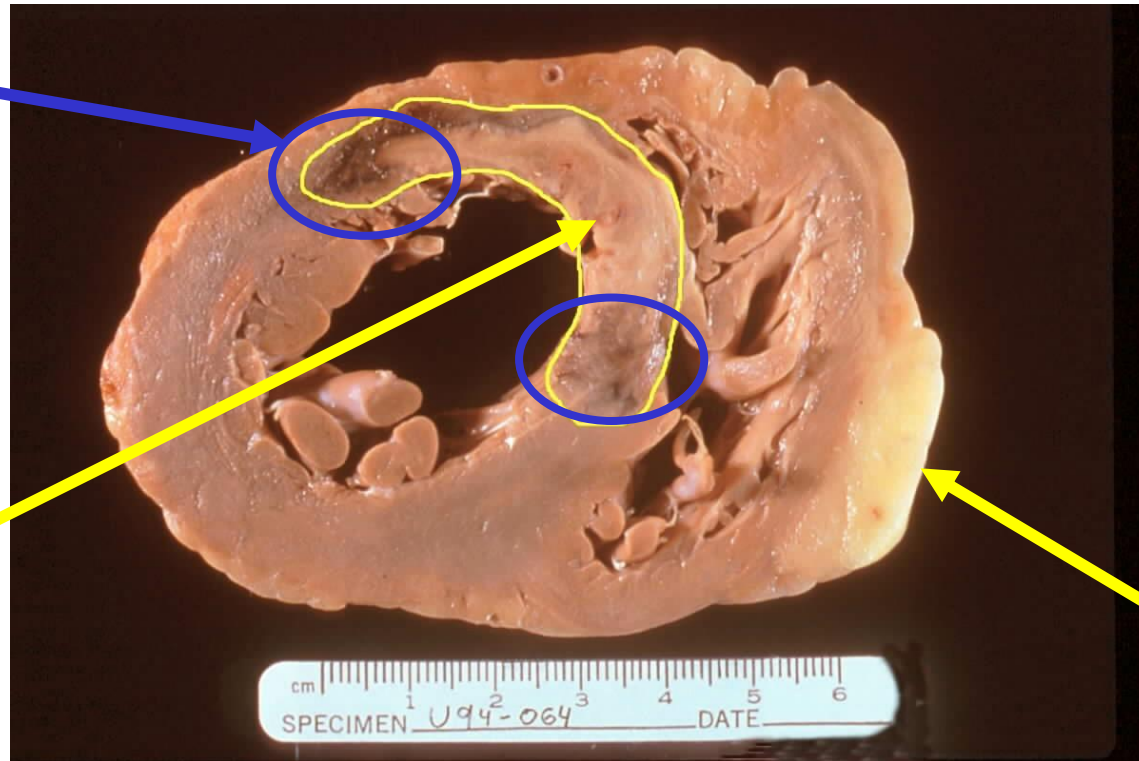
How Stuff Works:

<http://health.howstuffworks.com/adam-200083.htm>

ACUTE MYOCARDIAL INFARCTION

Dark area shows beginning of healing – increased blood supply

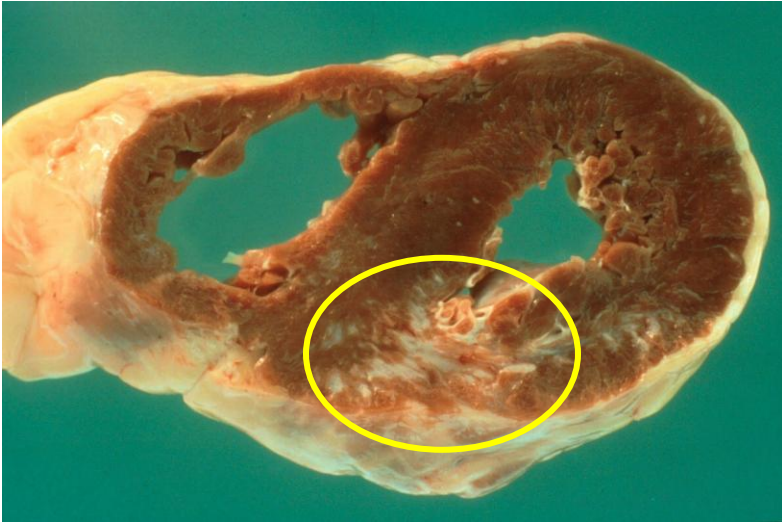
Light-colored tissue indicates a myocardial infarction



Normal fatty tissue

Heart Cross Section

OLD MYOCARDIAL INFARCTIONS



Scar tissue from an infarct at least two weeks old.

MYOCARDIAL INFARCTION

IMAGES: MYOCARDIAL INFARCTION:

Infarction as shown on a cross section of a heart (tan=infarction):

<http://www-medlib.med.utah.edu/WebPath/CVHTML/CV021.html>

Infarction in the left ventricular wall of the heart:

<http://www-medlib.med.utah.edu/WebPath/CVHTML/CV020.html>

INFORMATION ON MYOCARDIAL INFARCTIONS:

Medline Plus Medical Encyclopedia:

<http://www.nlm.nih.gov/medlineplus/ency/article/000195.htm>

MedicineNet.com:

http://www.medicinenet.com/heart_attack/article.htm

NORMAL BRAIN

IMAGES: BRAIN CROSS SECTIONS:

Horizontal through the top of the skull:

<http://www-medlib.med.utah.edu/WebPath/HISTHTML/ANATOMY/VHM1080R.html>

Horizontal through the midbrain:

<http://www-medlib.med.utah.edu/WebPath/HISTHTML/ANATOMY/VHM1120R.html>

INFORMATION ON BRAIN ANATOMY AND PHYSIOLOGY:

Gray's Anatomy – Brain:

<http://www.bartleby.com/107/189.html>

How Stuff Works:

<http://health.howstuffworks.com/brain.htm>

BRAIN STROKE



Hemorrhage

BRAIN CROSS SECTION (VERTICAL)

BRAIN STROKE

IMAGES: BRAIN STROKE:

Stroke shown on a vertical cross section of a brain:

<http://www-medlib.med.utah.edu/WebPath/CNSHTML/CNS223.html>

INFORMATION ON BRAIN STROKES:

Medline Plus Medical Encyclopedia:

<http://www.nlm.nih.gov/medlineplus/stroke.html>

National Institute of Neurological Disorders and Stroke:

<http://www.ninds.nih.gov/disorders/stroke/stroke.htm>